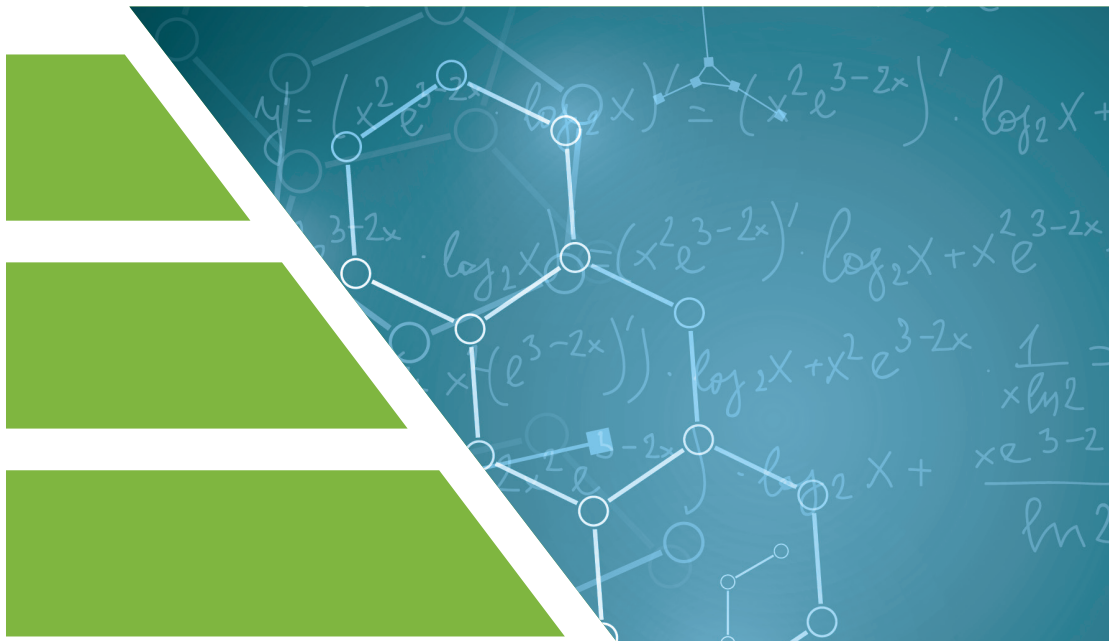


Your local **gas generation** partner



## Gas Generators

For SCIEX Systems

SCIEX approved vendor



Discover more at [www.peakscientific.com/sciex](http://www.peakscientific.com/sciex)

## Our story

### THE PEAK WAY

---



With over 25 years' experience pioneering reliable gas generator technology, PEAK Scientific is a leading innovator in the design, manufacture and support of high-performance nitrogen, hydrogen and zero air gas generators for analytical laboratories. Established in 1997 near Glasgow (Scotland), where our corporate Headquarters and high-tech manufacturing and R&D facilities reside, PEAK Scientific boasts a significant local presence on every continent – including major operations in North America, Europe, China and India.

Our strength lies in providing our customers with high-quality, dependable gas generation solutions to meet their specific laboratory and instrument demands; what differentiates us is our world-class technical support and on-going service care throughout the generator's lifespan.

### MANUFACTURING EXCELLENCE

---



Our products are the result of our meticulous Research and Development culture, built over more than 25 years at the forefront of the gas generator market. Every PEAK Scientific gas generator is designed at our ISO 9001:2015 accredited manufacturing center of excellence in the UK to ensure compliance with all applicable safety standards.

As we have expanded, our R&D capabilities have advanced to the point where we are better equipped than ever to meet changing market demands. By implementing the latest manufacturing technologies and philosophies, PEAK continues to improve product quality, responsiveness and efficiency – resulting in a better value proposition for our customers.

## Our Brand Promise

# Our priority is your complete satisfaction

Our commitment is to provide you with a reliable gas generation solution that adds value to your workflow. We achieve this through robust product engineering, our unique comprehensive 'repair or replace' warranty, and a global on-site maintenance service that is unmatched in our industry.

Our priority is your complete satisfaction. By taking due care of your gas flow, we give you peace of mind and enable you to focus on your workflow. This is the PEAK Promise.

## Our story

### PEAK AND SCIEX

---



SCIEX, the global manufacturer of mass spectrometry solutions headquartered in Framingham, Massachusetts, has been working in conjunction with PEAK Scientific for more than two decades. A relationship which began in 2000 with the production of the NM20ZA and is prospering with the introduction of the Genius XE SCI 2 - SCIEX have tested and approved all models of PEAK Scientific generators which complement the full range of SCIEX systems.

Product Managers and Engineers from both organizations are in constant contact throughout the New Product Development process to ensure PEAK's products can meet and exceed the specific gas requirements of SCIEX's range of LC-MS solutions.

In most cases, there is a dedicated PEAK Scientific gas generator which has been tested, validated and approved by SCIEX for use with SCIEX instruments.

### DEDICATED GAS SOLUTIONS FOR SCIEX

---

Three distinct product series define our core offering to supply SCIEX mass spectrometer systems. Our best-selling Genius Series, designed mainly for LC-MS applications, is a self-contained system featuring integrated compressors which deliver laboratory-grade nitrogen at various pressures and flow rates. The Genius 1024 offers the exact flows and pressures for all three gases required by the majority of SCIEX instruments while the Genius XE SCI 2 has been developed with SCIEX for the more demanding SCIEX Triple Quad™ 7500 LC-MS/MS System - QTRAP® Ready and Echo® MS Systems\*.

The Infinity & Solaris Series of nitrogen gas generators are silent running compressor-free systems for laboratories with an in-house supply of clean, dry air - delivering nitrogen at a wide range of flow rates for either single or multiple mass-spec instruments.

Developed exclusively for SCIEX, the MS Bench SCI range provides a modular workstation with provision for either integrated gas generation or a noise abating enclosure for roughing pumps.

\*Echo and Echo MS are trademarks or registered trademarks of Labcyte, Inc. in the United States and other countries, and are being used under license.

## Application Matrix

Application	Built in compressor	No compressor
Echo® MS System	Genius XE SCI 2	Infinity 1032
Triple Quad™ 7500 LC-MS/MS System – QTRAP® Ready	Genius XE SCI 2 MS Bench (G) SCI 2	Infinity 1032
X500 Series QTOF TripleTOF® 6600 6500+ Series 6500 Series TripleTOF® 5600+ 5000 series 5500 series	Genius 1024 MS Bench (G) SCI 1	Infinity 1031
TripleTOF® 4600 API 4500 Series API 4000 Series API 3200 Series Triple Quad 3500	Genius 1024 MS Bench (G) SCI 1	
3200 MD	Genius XE 35	Solaris XE
4500 MD and Topaz® System	Genius 1024	Infinity 1031 Hi-Flow
ZenoTof 7600 LC-MS/MS system*	Genius XE SCI 2 MS Bench (G) SCI 2	Infinity 1031
<p>Note: Some SCIEX models may be supplied with nitrogen gas only, please see the relevant site guide for additional details.</p> <p>For SCIEX models API5500, API4500 and the Triple TOF 5600, SCIEX recommend only Zero Grade Air to be used for SOURCE GAS (Gas 1/Gas 2) when operating a Nanospray Ion Source. When using UHP N2 with this ion source, there is an increased risk of corona discharge, which can damage the emitter tip. However, if customer is using the DuoSpray™ or Turbo V™ or PhotoSpray ion source, they can still use UHP N2 for Gas 1 and Gas 2.</p> <p>MS Bench (G) SCI 1 gas output is suitable for all instruments except IVD medical devices, all SCIEX Benchtop MS can be placed on MS Bench SCI 1. Vac Pumps for floor standing Triple TOFs can be placed inside MS Bench SCI 1</p> <p>For SCIEX ECD application there is no gas generator solution currently.</p> <p>*Though ZenoTof 7600 can be supplied by the MS Bench (G) SCI 2, it cannot be situated on top of any MS Bench.</p>		





“The instrument is quiet and provides high quality gas for our LC/MS system.”

Cindy Li, B. Braun Medical Inc., Sheffield, UK



## Application Matrix

# Genius 1024

### DESCRIPTION

Designed exclusively for SCIEX applications, the Genius 1024 provides a compact single source gas solution for all SCIEX LC-MS systems (excluding MD).

The Genius 1024 is built around the trusted and proven technology of PEAK Scientific's Genius series of generators. Designed mainly for LC-MS applications, these are self-contained systems featuring integrated compressors, delivering laboratory-grade nitrogen at various pressures and flow rates required by numerous instruments.

### Features

Delivers nitrogen as curtain gas and dry air as source and exhaust gas at flow rates suitable for all single LC-MS systems (excluding MD).

Developed specifically for SCIEX LC-MS systems

Compressor based solution, no need for an external air supply

Service indication to allow planning of preventative maintenance

Minimal set-up required

Highly economical source of nitrogen gas with low lifetime running costs

Gas is supplied on demand so works to your schedule



Product	Flow Rate	Gas Output	Pressure	Size (HxWxD)	Application
Genius 1024	19 L/min 26 L/min 25 L/min	Nitrogen Dry Air Dry Air	65 psi / 4.5bar 100 psi / 6.9 bar 60 psi / 4.1 bar	713 x 600 x 750 mm 28.1 x 23.6 x 29.5"	Single SCIEX LC-MS (excluding MD)



Product

# Genius XE SCI 2

DESCRIPTION

The Genius XE SCI 2 gas generator is a cutting-edge evolution in laboratory gas generation combining advanced technology with refined and robust engineering. A premium standalone nitrogen and air solution for the SCIEX LC-MS systems, Genius XE SCI 2 also supports the higher gas flow requirements of the recently released Echo® MS System.

Features

Designed specifically to meet exact demands of the SCIEX Triple Quad™ 7500 LC-MS/MS System and Echo® MS System\* when and if required, no manual input needed

24/7 performance- next generation high performance premium compressors, ensuring maximum uptime of your LC-MS instrument

ECO (Electronic Compressor Optimisation™) technology for increased compressor durability and reduced carbon footprint

Repeatability- Multi-Stage Purification™ to reduce moisture and contaminants providing consistent quality of gas

Low impact on laboratory with low noise and heat emissions



\* Echo and Echo MS are trademarks or registered trademarks of Labcyte, Inc. in the United States and other countries, and are being used under license.

Product	Flow Rate	Gas Output	Pressure	Size (HxWxD)	Application
Genius XE SCI 2	26 L/min 32 L/min 25 L/min	Curtain Source Exhaust	60 psi / 4.1bar 100 psi / 7.2 bar 70 psi / 4.8 bar	700 x 570 x 897 mm 28 x 23 x 36"	Echo® MS System SCIEX Triple Quad™ 7500 LC-MS/MS System ZenoTof 7600 LC-MS/MS system



“The new MS Bench SCI product line provides an innovative bench solution to our customers looking to optimize their lab space and reduce the footprint of their LC-MS system.”

Paul Johnson, Senior Product Manager (OEM), SCIEX





## Product

# MS Bench SCI 1

### DESCRIPTION

Developed exclusively for SCIEX, the MS Bench SCI range provides a modular workstation with provision for either integrated gas generation or a noise abating enclosure for roughing pumps. MS Bench SCI is designed specifically for use with the current and latest mass spectrometers at SCIEX\*.

### Features

Designed exclusively for SCIEX to provide modular bench solution for all SCIEX LC-MS instruments\*

Noise abated compartment suitable for housing vacuum pump(s) (non generator variant only)

'Genius Inside': true plug & play gas generation (MS Bench (G) SCI 1 only). No external compressed air source required.

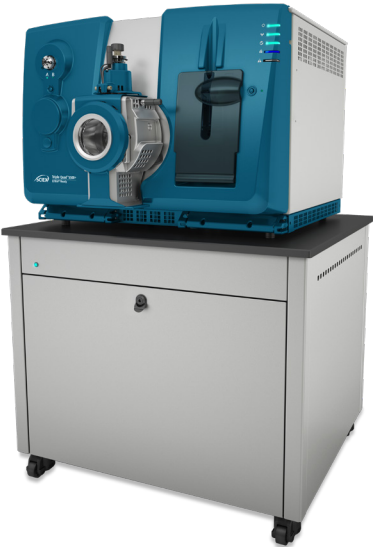
Noise & vibration dampening, suitable for use as instrumentation bench

CSA / FCC / CE compliant

Chemical-resistant phenolic resin worktop

Self-levelling castor wheels for seamless installation with existing lab bench system

\*MS Bench (G) SCI 1 gas output is suitable for all instruments except IVD medical devices, all SCIEX Benchtop MS can be placed on MS Bench SCI 1. Vac Pumps for floor standing Triple TOFs can be placed inside MS Bench SCI 1



Product	Flow Rate	Gas Output	Pressure	Size (HxWxD)	Application
MS Bench (G) SCI 1	19 L/min 26 L/min 25 L/min	Curtain Source Exhaust	65 psi / 4.5bar 100 psi / 6.9 bar 60 psi / 4.1 bar	762 x 914 x 787 mm 30 x 36 x 31"	SCIEX LC-MS instruments (excluding IVD medical device instruments)



Product

# MS Bench SCI 2

DESCRIPTION

The MS Bench SCI 2 range provides a modular workstation with provision for either integrated gas generation or a noise abating enclosure for roughing pumps. MS Bench SCI 2 is designed specifically for use with the SCIEX 7500 LC-MS/MS System.

Two variants of the MS Bench SCI 2 are available. MS Bench (G) SCI 2 features a self-contained gas generator, providing a reliable and costefficient source of both nitrogen (Curtain Gas™) and clean, dry oil-free air for source and exhaust gas. The other variant, the MS Bench SCI 2, comes without the gas generator, instead providing a compartment below the bench, suitable for housing specific roughing pumps.

Features

Designed exclusively for SCIEX to provide modular bench solution for all SCIEX LC-MS instruments\*

Noise abated compartment suitable for housing vacuum pump(s) (non generator variant only)

‘Genius Inside’: true plug & play gas generation (MS Bench (G) SCI 2 only).

Noise & vibration dampening, suitable for use as instrumentation bench

CSA / FCC / CE compliant

Chemical-resistant phenolic resin worktop

Self-levelling castor wheels for seamless installation with existing lab bench system

\*For other SCIEX LC-MS instrument gas solutions see MS Bench (G) SCI 1, MS Bench SCI 1 and Genius 1024.



Product	Flow Rate	Gas Output	Pressure	Size (HxWxD)	Application
MS Bench Sci 2	-	-	-	762 x 1040 x 787 mm 30 x 41 x 31"	SCIEX Triple Quad™ 7500 LC-MS/MS System
MS Bench (G) Sci 2	26 L/min 26 L/min 25 L/min	Curtain Source Exhaust	60 psi / 4.1bar 100 psi / 6.9 bar 70 psi / 4.8 bar	762 x 914 x 787mm 30 x 36 x 31"	Triple Quad™ 7500 LC-MS/MS System instrument ZenoTof 7600 LC-MS/MS system



Product

# Solaris XE

DESCRIPTION

PEAK Scientific’s Solaris XE generator has been engineered using membrane technology to meet the gas delivery requirements for labs using LC-MS or multiple lower flow nitrogen instruments such as ELSDs or Compact Mass Spectrometers. Solaris XE can operate with varying flow rates (up to 35L/min of high purity nitrogen), purity (up to 99.5%) and outlet pressure can be adjusted down from 116psi, offering a flexible solution for a variety of applications.

Features

Nitrogen up to 35L/min, up to 116 psi and up to 99.5% purity

Variable outlet flow, pressure and purity

Compact, stackable system maximizing the use of valuable laboratory floor or bench space

Colour indicative LED lighting for easy status awareness

Manufactured and tested to highest spec in UK, CE/FCC/CSA certified



Product	Flow Rate	Gas Output	Pressure	Size (HxWxD)	Application
Solaris XE	35 L/min	Nitrogen	116psi / 8 bar	156 x 343 x 650 mm 6.2 x 13.5 x 25.6"	LC-MS, LC-MS/MS or Multiple ELSDs

We offer a range of **[Peak Protected]** services to suit your particular needs.



**Premium Plan**

Complete maintenance care with 24 hour rapid response breakdown cover



**Complete Plan**

Complete maintenance care with guaranteed response time breakdown cover



**Fixed Price PM**

Preventative maintenance carried out by an expert PEAK engineer at a time that suits you



**Supported Plan**

Preventative maintenance support specifically for compressor-less generators



**Paid Repairs**

On-site repairs carried out by a certified PEAK FSE in case of a breakdown



**Replacement Parts**

Genuine PEAK parts with express delivery, ensuring optimal performance and lifetime



**Installation**

Trained PEAK FSE will visit to install and commission your generator



**IQ/OQ**

Certified assurance for applications requiring documented qualification



**Support Hotline**

Around the clock support by phone or online with our global technical helpdesk

# PEAK Protected

## Safeguard your laboratory workflow with [**PEAK Protected**]<sup>TM</sup>

Servicing any equipment in your lab should not be seen as just an option, it should be treated as a necessity. With many moving parts and wear & tear, especially where generators feature integrated compressors, as well as filters and other 'consumables', a gas generator needs to be maintained regularly to continue to perform at its best for many years.

Here at PEAK we see your gas generator as the beating heart of your laboratory, enabling your analytical instruments to perform and achieve the results you need. With this being the case it is extremely important you look after your 'beating heart' to ensure the best possible results.



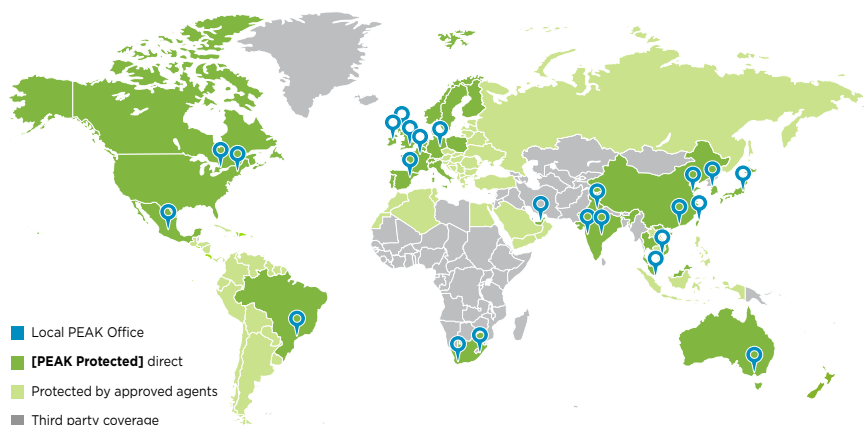
## Not all warranties are equal

What differentiates PEAK from other gas generator manufacturers is that a PEAK gas generator comes with a truly comprehensive on-site warranty. This means that in the unlikely event that your gas generator develops a problem, we will send a PEAK Certified Field Service Engineer to your laboratory to try to resolve the issue on-site and get you back up and running with minimal fuss and disruption.

What's more, when we say fully-comprehensive, we mean it. Every part of your generator is covered during warranty. While other manufacturer warranties may only cover certain components or require the return of your generator to the factory for repair, leaving you without gas for weeks or even months, our warranty is designed to give you complete peace of mind.

To find out more about our unique warranty, visit **[www.peakscientific.com/warranty](http://www.peakscientific.com/warranty)**

# Your local gas generation partner



PEAK Scientific has highly trained, fully certified Field Service Engineers located in over 20 countries across every continent around the world. This allows us to provide an industry-leading rapid response service to our customers. With **[PEAK Protected]**, your laboratory's productivity becomes our top priority.

## Contact us today to discover more!

North America  
Tel: +1 866 647 1649

Europe  
Tel: +44 (0)141 812 8100

China  
Tel: +86 21 5079 1190

India  
Tel: 1800 2700 946

For contact details of all PEAK local offices around the world, visit:  
[www.peakscientific.com/offices](http://www.peakscientific.com/offices)