

# Precision Nitrogen

## Agilent Approved Nitrogen Generator for GC

Part Number : See Reverse

Service Kit : 08-3612

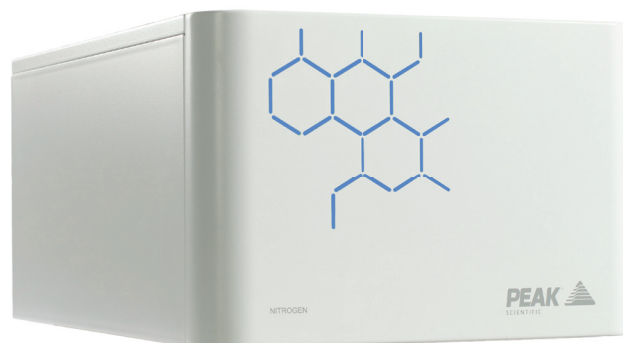


Your local **gas generation** partner

### Description

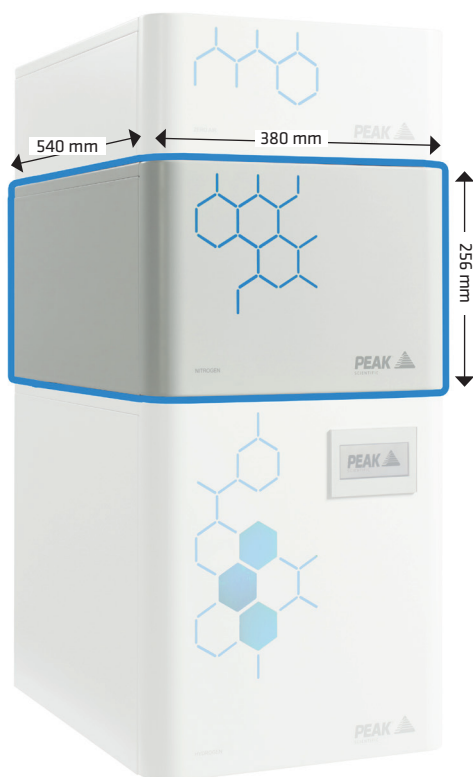
Precision Nitrogen has been developed to provide a constant and consistent source of Nitrogen for detector make-up gas at standard/typical detection levels for **Agilent Technologies** GC applications, as well as headspace vial pressurization, purge and trap, tube conditioning for thermal desorption and sample blow down. These generators are capable of delivering high purity nitrogen, removing oxygen and moisture via Pressure Swing Adsorption and Carbon Molecular Sieve technology.

As with all Precision Series generators, Nitrogen models benefit from a compact and modular, stackable design, minimizing the total footprint required for GC gas supply, and providing flexibility to add or remove modules as your laboratory requirements evolve over time.



### Applications

- **Sample Prep**
  - Headspace
  - Purge and Trap
  - Tube Conditioning
- **Detector Gas**
  - Make-up / Reference



Precision Nitrogen shown in a typical Precision stack.

### Key Features

- Suitable as make-up gas at standard detection limits
- Nitrogen generated on demand, as and when it is required
- Constant and consistent supply, avoid running out of gas during analysis
- Avoid contaminants entering system as result of changing over empty cylinders
- Dedicated Precision compressor module available where house supply not available
- Integrates seamlessly with other Precision units
- Ultra-fast start-up time, quick to reach standard operating purity
- Minimum maintenance with an annual filter change
- Certified to most recent CSA standards (3rd revision) for peace of mind and compliance



## Agilent Technologies

Approved GC gas solution

Technical Specifications	Nitrogen, 250cc	Nitrogen, 600cc	Nitrogen, 1L
Max Flow Rate	250cc/min	600cc/min	1,000cc/min
Max Pressure	80 psi / 5.5 bar		
Purity	> 99.9995%		
Gas Outlets	1 x 1/4 " BSPP		
Min/Max Air Inlet Pressure	7.6-8.27 bar / 100-120 psi		
Min Air Inlet Flow	35 lpm		
Min Inlet Air Quality	ISO8573 - 1:2010 Class 1.4.1		
Phthalates	None		
Suspended Liquids	None		
Start-Up Time For Purity	1.5 hours		
Operating Temperature	5°C - 35°C / 41°F - 95 °F		
Electrical Requirements	110 VAC ± 10% 60 Hz 0.37A / 230 VAC ± 10% 50 Hz 0.17A		
Power Consumption	39.1 - 40.7 Watts		
Heat Output	Up to 140 BTU/Hr		
Generator Dimensions (WxDxH)	38.0 x 54 x 25.6 cm / 14.9 x 21.2 x 10"		
Generator Weight	21 Kg (46.2 lbs)	21 Kg (46.2 lbs)	26 Kg (57.3 lbs)

Ordering Information			
Part Number	71-0250	71-0600	71-1000
Annual Service	www.peakscientific.com/ordering		
Standard Maintenance Plan			
Complete Maintenance Plan			

Precision Air Compressor	110v	230v	Annual Service Kit
Part Number	84-1555	84-0555	08-8372

## [PEAK Protected]<sup>TM</sup>

Peak Scientific gas generators define the benchmark in reliability, convenience and performance in laboratories around the world, and come backed by a 12 month warranty. Beyond this period however you can ensure that your investment continues to be **[Protected]** by our comprehensive generator care cover.

Our world-class aftercare support packages deliver a program of scheduled preventative maintenance whilst giving you the reassurance of instant access to worldwide technical support and priority on-site response in the untimely event of a breakdown.

Peak Scientific HQ  
Tel: +44 141 812 8100  
Fax: +44 141 812 8200

Peak Scientific North America  
Tel: +1 866 647 1649  
Fax: +1 978 608 9503

Peak Scientific China  
Tel: +86 21 5079 1190  
Fax: +86 21 5079 1191  
Service Hotline: +86 400 888 1612

For a full list of our worldwide office locations, please visit:

Web: [www.peakscientific.com](http://www.peakscientific.com)  
Email: [marketing@peakscientific.com](mailto:marketing@peakscientific.com)

Peak Scientific's Quality Management System conforms to: ISO:9001:2008



FM 515973



### Product Certifications

