



Your local **gas generation** partner

Precision Hydrogen SL

Product overview

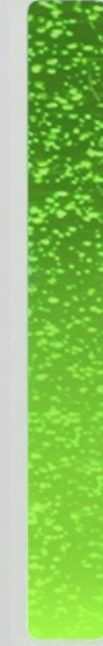


A **PEAK** gas generation brand



Introducing

Precision SL



Precision SL



Positioning

The smallest and
easiest to use
hydrogen generator
for GC-FID.

Streamline your GC with Precision SL by Peak Scientific... **Smaller, Simpler, Safer.**





The smallest and easiest to use hydrogen generator for GC-FID

Smaller

- Smallest H₂ gas generator for GC-FID
- 1/5 of the size of existing Precision H₂ products
- Reduced footprint, maximizing lab space

Simpler

- Single button operation
- Quick and simple user maintenance
- Plug and play

Safer

- Gas generated on-demand, with minimal storage
- Auto-shutdown safety features
- Supply independence, minimize 3rd party site visits

Key Features

- 99.9995% purity and up to 200cc/min
- Single-button start-up and shutdown
- End-user managed servicing
 - Simple annual DI cartridge replacement and periodic desiccant capsule swap out
- 3 options for water delivery
- Zero maintenance costs in Y1
- CE & CSA compliant
- Tested by Agilent Japan on FID & FPD
- 2 year comprehensive warranty*



* With purchase and installation of a Preventative Maintenance Kit: DI cartridge and Desiccant - user can replace with ease.

Safety features

- Automatic system check on start-up
- Internal leak detection
- Over-pressure shutdown
- Capacity excess (external leak detection)
- <175cc gas volume within the Precision SL 200cc
- Meets IEC standards for laboratory use
- No compromise on safety compared with Precision H2

Water filling options

1. Manual water fill (MWF)

- Customer refills the internal water tank by lifting front lid and pouring in DI water
- Full internal water tank expected to last around 1 week (100cc) / 3-4 days (200cc)

2. Automatic water fill (AWF)

- Works in the same way as Precision H2
- Internal loading pump will pump in water from an external DI bottle as and when required
- 4L water bottle will last around 1 month (100cc) / 2 weeks (200cc)

3. Pressurized water fill (PWF)

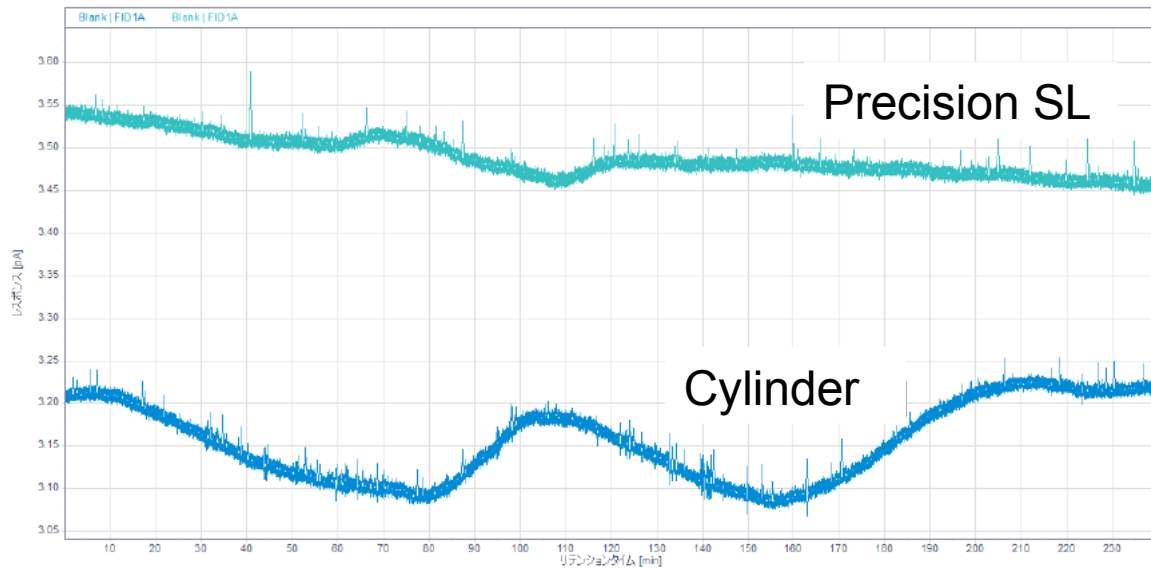
- Generator directly connected to an external DI water supply
- Water pressure between 1 and 3 bar required

Water quality must meet ASTM type II (<1 μ S conductivity / >1M Ω resistivity) for all water filling options.

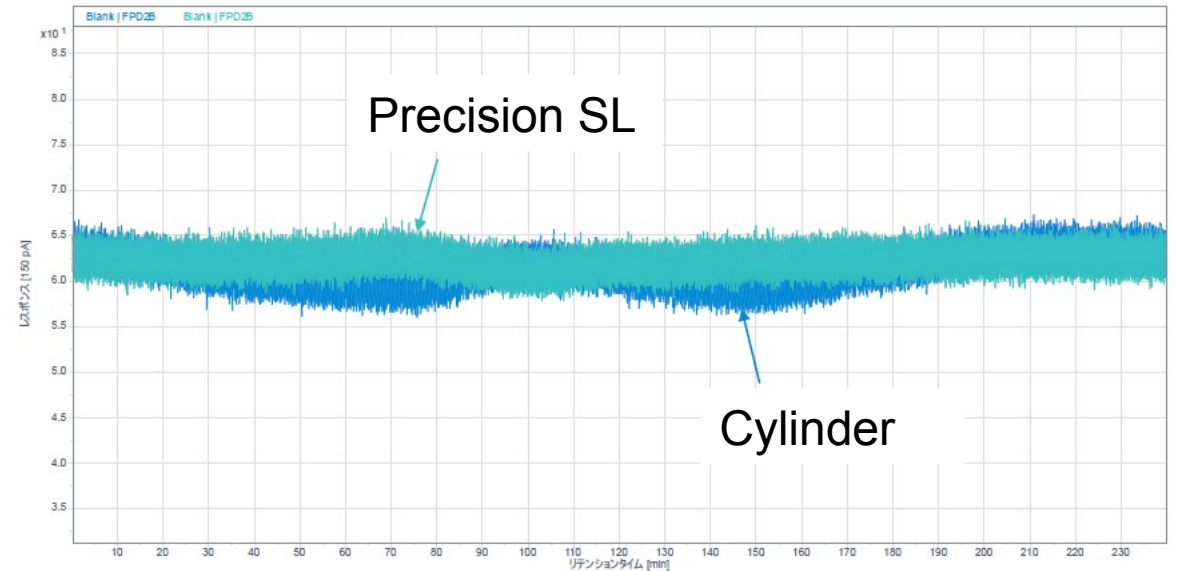
Agilent Japan feedback

Precision SL produces extremely high-quality hydrogen gas and is suitable for all GC detectors, including FID and FPD.

FID – Cylinder (blue) vs Precision SL (teal)



FPD – Cylinder (blue) vs Precision SL (teal)



Can customers refill the desiccant cartridge?

No. the desiccant cartridges are single-use only and can only be purchased from Peak or Peak Partners

How does the 2-year warranty work?

The customer has to register the generator with Peak and needs to show that they have ordered and record replacement of the DI-cartridge within 13 months of installation. It is that simple.

How long will the MWF operate for between fills?

The water tank should hold enough water to provide hydrogen gas for 3- 4 days on the 200cc and about 1 week on the 100cc model.

Is it ok to supply the GC with 100psi pressure for the FID?

Agilent's gas specifications state maximum 100psi supply pressure for detector gas, so SL is within specification of all Agilent GCs.

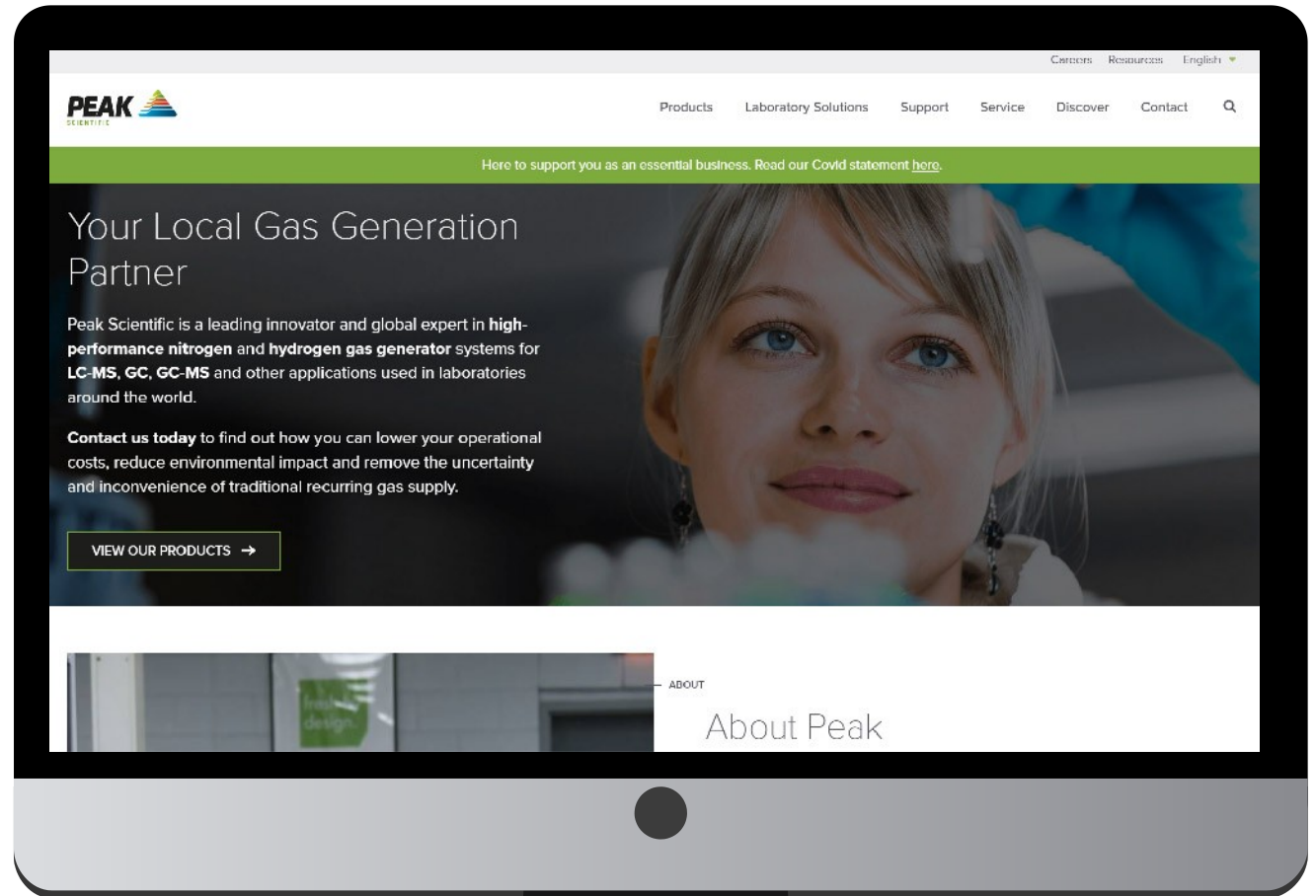
How many DI columns and desiccant capsules are included with a new unit?

The 100cc model will ship with 1x DI cartridge and 2x desiccant capsules. The 200cc model will ship with 1x DI cartridge and 4x Desiccant capsules.

Available on the Peak website, Resource Space & YouTube

- Product information
- Application notes
- Brochures & Data sheets
- Product videos
- User manual

www.peakscientific.com



Thank you

www.peakscientific.com

Our Vision:

To exceed the expectation of our Customers, Colleagues and Suppliers

Our Values:

- **Respect** customer, supplier, colleague
- **Restless** constantly striving to improve
- **Freedom with responsibility**
- **Fun & passion** in everything we do

